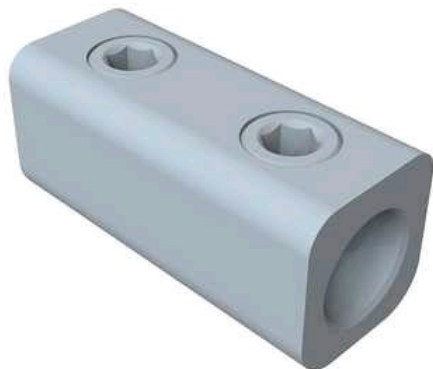


# WS-350I

by CMC

Catalog ID: WS-350I



Aluminum splicer reducers

- Clear plated for low-contact resistance.
- Fully tested to ANSI C119.4 for Class 'A' connectors.
- Supplied with radial-tipped set-screws.
- Connector fabricated from 6061-T6 aluminum alloy for conductivity and strength.
- Solid barrier center stop prevents contact of dissimilar metals.
- For installation, CMC® recommends the use of a 9" insulated Allen wrench.

## Product Details

### General

Material	Aluminum
UPC	192663077625

### Electrical Ratings

Voltage Rating	600 V
----------------	-------

### Conductor Related

Conductor Range	350 Kcmil - #6 AWG
-----------------	--------------------